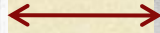
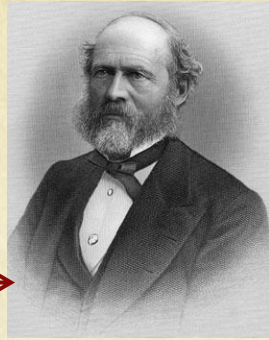
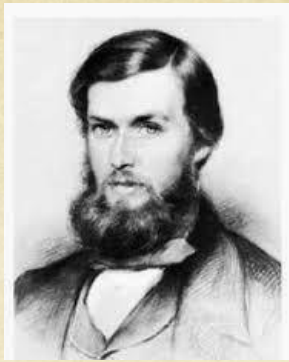
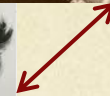


Cultural Anthropology Theories, Perspectives & Methodologies

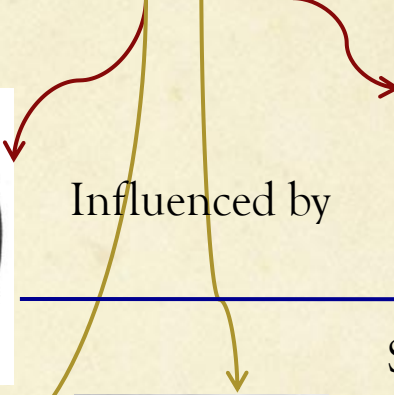
Different ways of examining and
understanding different cultures



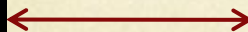
→ Teacher



Influenced by



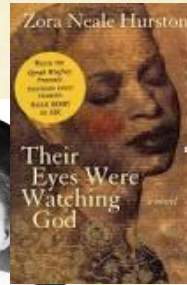
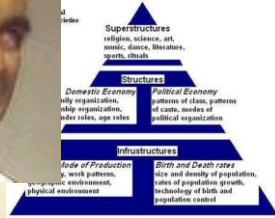
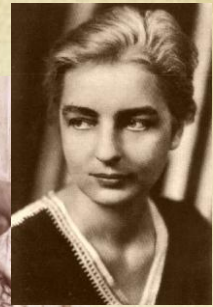
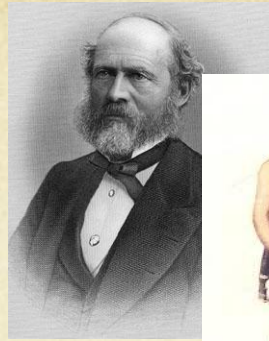
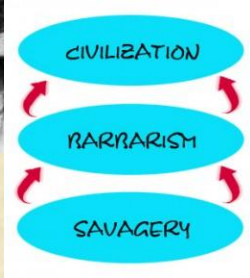
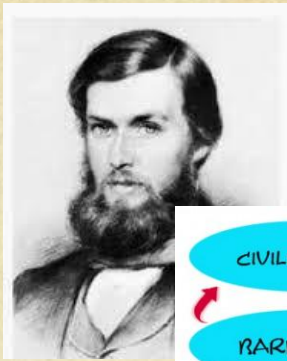
Something in common*



Contemporaries

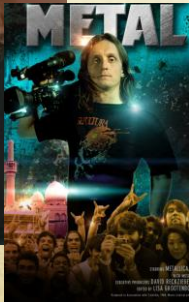
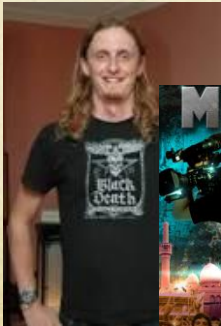


Canadians

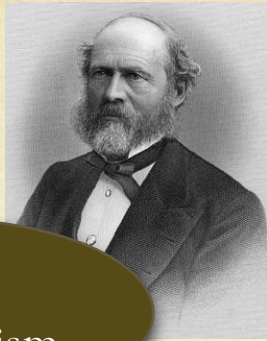
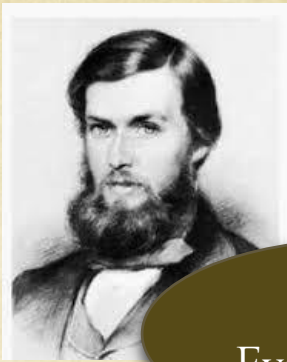


'Gender is a socially imposed division of the sexes.'
(Gayle Rubin DATE: 546)

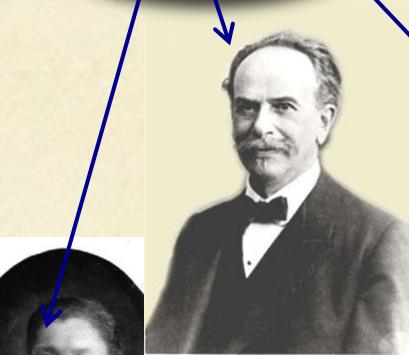
SEX ≠ GENDER	
Sex Male/ Female	Gender Masculine/ Feminine
Biology: chromosomes, hormonal profiles, internal and external sex organs	Culture: the characteristics that a society or culture delineates as masculine or feminine



Historicism



Social Evolutionism



Culture & Personality



Feminist Anthropology



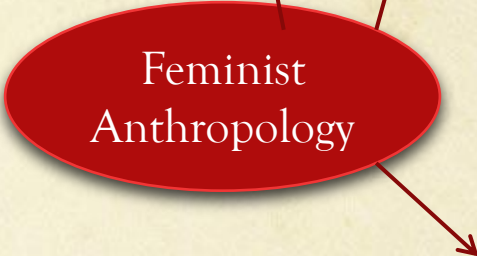
Cultural Materialism



Functionalism



Post Modernism*



Heroes in Anthropology

- Who are they?
- What did they do?
- What theory or perspective are they connected to?
- Who are they connected to?
- What are their methodologies?
- What have they contributed to the world of anthropology? *